

# Interpon D Futura Collection 2022-2025

Superdurable Finishes

**Interpon**<sup>®</sup>

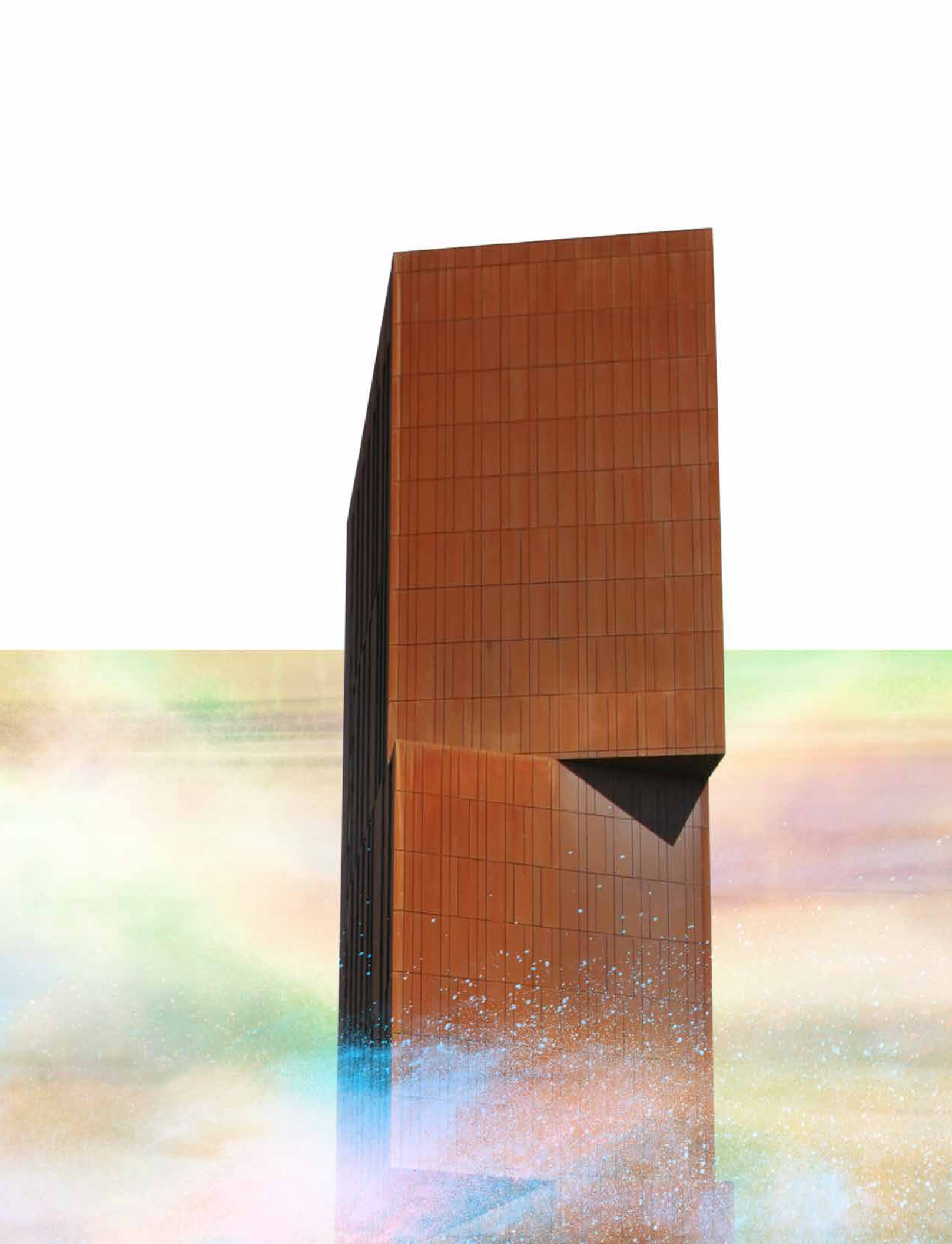
POWDER COATINGS

■ Architectural



Your imagination starts with our finish

**AkzoNobel**





# Interpon D Futura Collection

## 2022-2025

Interpon has a proud history of helping architects bring their creations to life through colors and finishes that will inspire and endure to imagine a new and exciting future. The Interpon D Futura Collection has been a favorite with architects for more than 20 years since the first collection appeared in 2000, although some of the colors date back even further to 1991. This neutral palette forms the backbone of the collection and is constantly updated by AkzoNobel's trend researchers and color specialists to make sure it is completely up to date with contemporary architectural design.

This history, as well as the forecasting by our market-leading design and research teams, has led to a new Interpon D Futura Collection, providing modern buildings with a range of wonderful colors and beautiful finishes to deliver an aura of wonder and energy.

Because Interpon D Futura is so much more than simply a collection of exciting colors. Interpon D Futura is an emotion, a collection that inspires a feeling of tranquillity and peace, of thoughtfulness and healing, bringing balance to buildings and projects for years to come.

Through the three new color palettes - Merging Worlds, Healing Nature, and Soft Abstraction - Interpon D Futura reminds us of our connection to the natural beauty that surrounds us, enveloping us in a warm and comforting blanket of calm, safe in the knowledge that our creations, and our world, are now better protected.

## Building a sustainable future

Interpon D Futura Collection is not just helping to imagine the future, it is also protecting it. Backed by an Environmental Product Declaration (EPD), the collection's raw materials, manufacture and transportation have been assessed by an independent third-party to confirm its sustainability credentials.



THE INTERNATIONAL EPD® SYSTEM

## Creating futures that last

The collection delivers exceptional superdurability to provide the highest levels of gloss retention, color stability and UV resistance to limit chalking. And with the backing of a 20-year warranty\* and FGIA-AAMA2604, Qualicoat Class-2 and GSB Master, Interpon D Futura enables buildings to stand tall as symbols of our past, present and future.

\* Global 20 year warranty on the coating performance when applied by an Interpon D Approved Applicator.



# Merging Worlds

To design the global buildings of the future, it helps to reflect on the beauty of the past. Using deep, crimson reds and subtle browns, the Merging Worlds palette elevates authentic materials like brick and natural wood to create a bold and powerful statement.

Building on warm, rich tones, Merging Worlds plays on the theme of traditional craftsmanship from across the globe, creating comforting finishes that capture the style past with a nod to the future.



**Bronze**  
YW2847



**Sydney**  
Y227JQF



**Tasilaq Sablé**  
Y2326QF



**Tanami Sablé**  
YX310QF



**Sedona\***  
YX314QF



**Patah**  
Y226KQF



**Gris 2800 Sablé**  
Y2328QF



**Arches**  
Y225MQF



**Cusco**  
Y223KQF



**Ambre Sablé**  
Y2323QF



**Electrum\***  
Y224LQF



**Innoko Sablé**  
YX309QF



**Alby**  
Y221KQF



**Alamo\***  
Y2331QF



**Scarlett\***  
Y220LQF



**Noir 2300 Sablé**  
Y2345QF





# Soft Abstraction

We all need time to sit back and think, to rest and reconsider, to contemplate and imagine a positive future. Driven by the power of contemplation, this trend covers a beautiful range of neutral, soft tone color shades and fine metallics that bring vitality and health to open spaces, laying the foundations for people to connect and recharge.

It's the chance to escape the everyday and move to a brighter world, with a more colorful sense of community and purpose.



**Detendre**

Y225KQF



**Pyrite**

Y222KQF



**Gris 2150 Sablé**

Y2342QF



**Canon**

Y225LQF

**Interpon**<sup>®</sup>  
POWDER COATINGS



**Silver**

YW2797



**Bodrum**

Y2333QF



**Bleu 2700 Sablé**

Y2314QF



**Yazd Sablé**

Y2322QF



**Chicago**

Y228KQF



**Baku**

Y2375QF



**Rushmore\***

Y2321QF



**Grazalema**

Y221LQF



**Tourmaline\***

YX308QF



**Bleu 2600 Sablé**

Y2343QF



**Aquamarine\***

Y2334QF



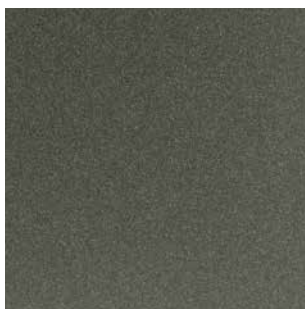
**Gris 2400 Sablé**

Y2344QF

\* Colors differ from European collection. Colors are indicative only.







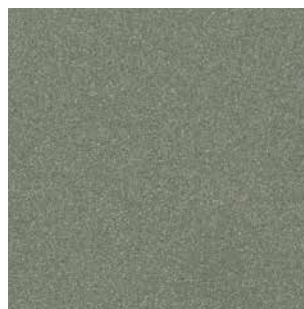
**Manganese**

Y224NQF



**Luxor**

Y222LQF



**Lichen**

Y2337QF



**Sage\***

Y2318QF



**Gris 2900 Sablé**

Y2339QF



**Babua**

Y226LQF



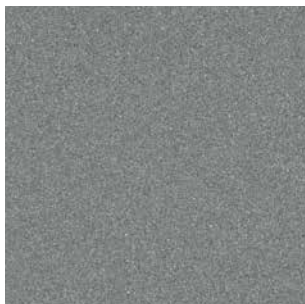
**Sumela**

Y221AQF



**Saguaro\***

Y224KQF



**Starlight Sablé**

Y2330QF



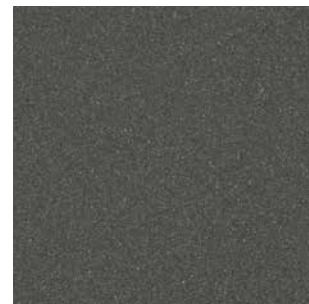
**Gris 2500 Sablé**

Y2324QF



**Changi**

Y2319QF



**Noir 2100 Sablé**

Y2340QF



**Brun 2650 Sablé**

Y2341QF



**Pachuca**

Y228JQF

# Healing Nature

With a renewed focus on health and wellbeing, Healing Nature provides the chance to reconnect with the world and find the balance to contrast our busy lives.

The trend showcases a range of natural shades – greens and earthy tones, organic shapes and unrefined patterns – that provide a grounding quality to bring us, and our architectural designs, closer to the surrounding environment bringing a sense of tranquillity and calm.



Location: Secondary School Gragnague, France | Architect: Groupe Nissou @ Olivier Accart

## AkzoNobel

We supply the sustainable and innovative paints and coatings that our customers, communities – and the environment – are increasingly relying on. Our world class portfolio of brands – including Dulux, International, Sikkens and Interpon – is trusted by customers around the globe. We're active in more than 150 countries and have set our sights on becoming the global industry leader. It's what you'd expect from a pioneering paints company that's committed to science-based targets and is taking genuine action to address globally relevant challenges and protect future generations.

For more information please visit [www.akzonobel.com](http://www.akzonobel.com).

© 2023 Akzo Nobel N.V. All rights reserved.

All products supplied & technical advice given are subject to the standard terms of sale of the AkzoNobel supplying company. Copyright ©2023 Akzo Nobel Powder Coatings Ltd. Interpon is a registered trademark of AkzoNobel.

Issue 1 - 06/2023

### Follow us

Powder Coatings by AkzoNobel



[architectural.interpon.com](http://architectural.interpon.com)

Speak to your local representative or contact [interpon.info@akzonobel.com](mailto:interpon.info@akzonobel.com) to learn more about what Interpon D Futura Collection can do for you.



**Interpon Design App**  
Created especially for  
architects and specifiers



### Environmental Production Declaration

An EPD® is a certified Eco-footprint;  
our commitment to sustainability.

# Interpon®

**Architectural**

Your imagination starts with our finish